

# Nishinomiya City Disaster Prevention Map for Flood and Landslide Disaster (Northern Area)

As of October 2014

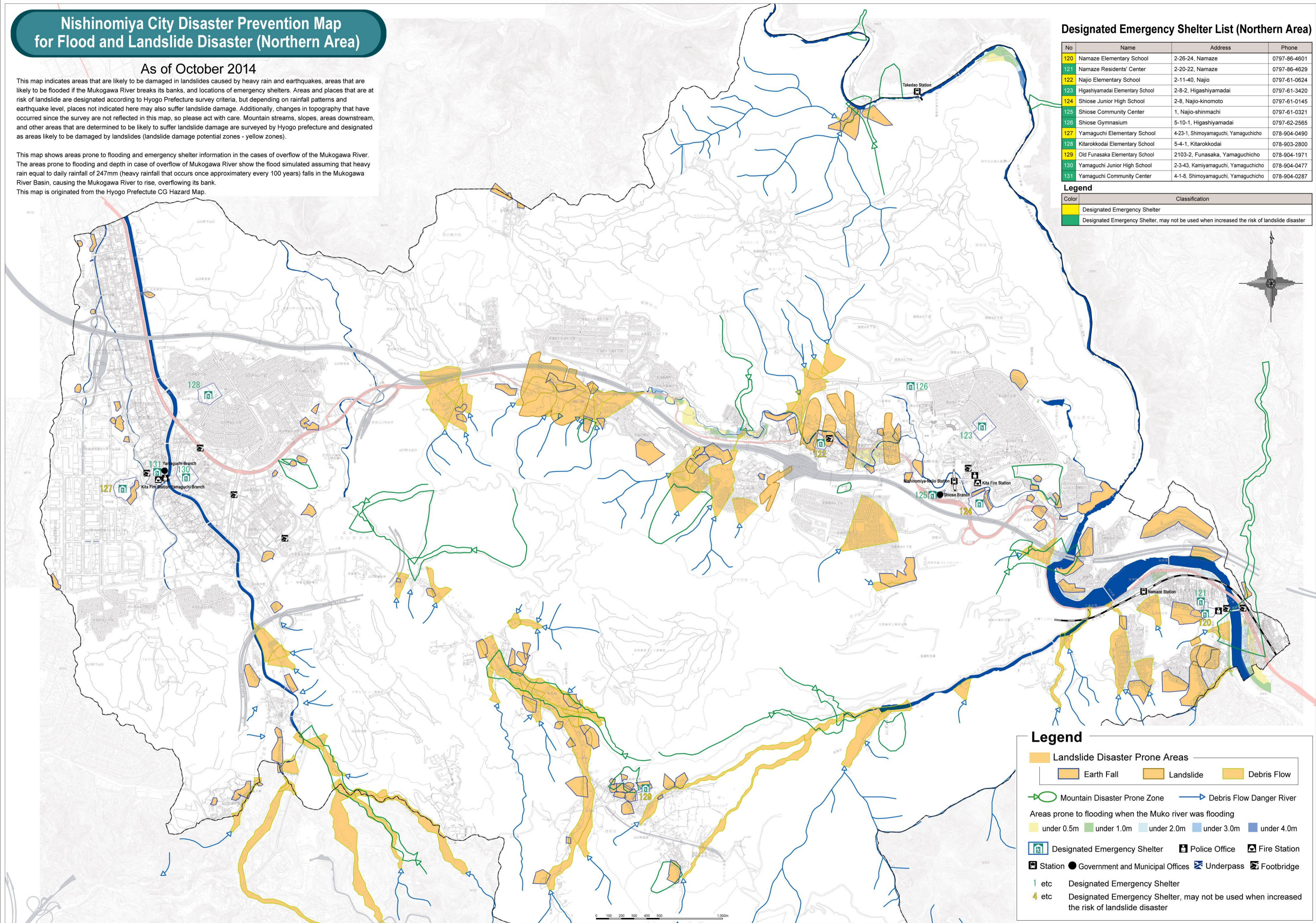
This map indicates areas that are likely to be damaged in landslides caused by heavy rain and earthquakes, areas that are likely to be flooded if the Mukogawa River breaks its banks, and locations of emergency shelters. Areas and places that are at risk of landslide are designated according to Hyogo Prefecture survey criteria, but depending on rainfall patterns and earthquake level, places not indicated here may also suffer landslide damage. Additionally, changes in topography that have occurred since the survey are not reflected in this map, so please act with care. Mountain streams, slopes, areas downstream, and other areas that are determined to be likely to suffer landslide damage are surveyed by Hyogo prefecture and designated as areas likely to be damaged by landslides (landslide damage potential zones - yellow zones).

This map shows areas prone to flooding and emergency shelter information in the cases of overflow of the Mukogawa River. The areas prone to flooding and depth in case of overflow of Mukogawa River show the flood simulated assuming that heavy rain equal to daily rainfall of 247mm (heavy rainfall that occurs once approximately every 100 years) falls in the Mukogawa River Basin, causing the Mukogawa River to rise, overflowing its bank. This map is originated from the Hyogo Prefecture CG Hazard Map.

## Designated Emergency Shelter List (Northern Area)

No	Name	Address	Phone
120	Namaze Elementary School	2-26-24, Namaze	0797-86-4601
121	Namaze Residents' Center	2-20-22, Namaze	0797-86-4629
122	Najio Elementary School	2-11-40, Najio	0797-61-0624
123	Higashiyamada Elementary School	2-8-2, Higashiyamada	0797-61-3420
124	Shiose Junior High School	2-8, Najio-kinomoto	0797-61-0145
125	Shiose Community Center	1, Najio-shinmachi	0797-61-0321
126	Shiose Gymnasium	5-10-1, Higashiyamada	0797-62-2565
127	Yamaguchi Elementary School	4-23-1, Shimoyamaguchi, Yamaguchicho	078-904-0490
128	Kitarokodai Elementary School	5-4-1, Kitarokodai	078-903-2800
129	Old Funasaka Elementary School	2103-2, Funasaka, Yamaguchicho	078-904-1971
130	Yamaguchi Junior High School	2-3-43, Kamiyamaguchi, Yamaguchicho	078-904-0477
131	Yamaguchi Community Center	4-1-8, Shimoyamaguchi, Yamaguchicho	078-904-0287

Color	Classification
	Designated Emergency Shelter
	Designated Emergency Shelter, may not be used when increased the risk of landslide disaster



### Legend

- Landslide Disaster Prone Areas
  - Earth Fall
  - Landslide
  - Debris Flow
- Mountain Disaster Prone Zone
- Debris Flow Danger River
- Areas prone to flooding when the Muko river was flooding
  - under 0.5m
  - under 1.0m
  - under 2.0m
  - under 3.0m
  - under 4.0m
- Designated Emergency Shelter
- Police Office
- Fire Station
- Station
- Government and Municipal Offices
- Underpass
- Footbridge
- 1 etc Designated Emergency Shelter
- 4 etc Designated Emergency Shelter, may not be used when increased the risk of landslide disaster